

BCS05

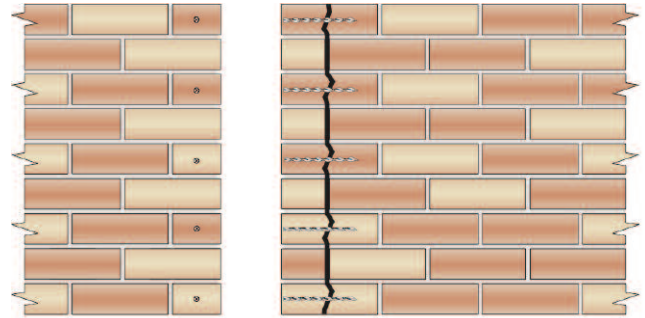
Repair of a crack near a corner in a cavity wall using DryFix

Product	Description	Code
DryFix	Stainless steel dry pinning system	HDF
CrackBond	Epoxy resin for filling cracks	HCB

METHOD STATEMENT

1. Mark the locations for the DryFix ties onto the face of the wall at the required spacing.*
2. Drill a 5mm Ø pilot hole through the near skin and into the remote skin to the specified depth using a light-weight SDS hammer drill set to a slow speed and light hammer only.* A rotary percussion 3-jaw chuck drill may be preferred if the masonry is particularly soft. A 6mm or 6.5mm Ø pilot hole size may be preferred if the masonry is particularly hard.
3. Attach the Helifix Power Driver Attachment to an SDS hammer drill set to a slow speed and light hammer only. (DryFix ties are self-tapping and will work themselves into the wall following the hammer action of the drill.)
4. Load the DryFix tie into the Power Driver Attachment.
5. Support the Power Driver Attachment with one hand, while using the other to work the drill, and drive the DryFix tie into the pre-drilled pilot hole to approximately 10mm beyond the surface of the near skin.
6. Make good all holes at the surface using either a mixture of sand, cement and oxide colouring to match the original surrounding brick surfaces or a silicone sealant coated with brick dust or drillings. Make good the crack using an appropriate Helifix bonding agent or filler, e.g. CrackBond, depending on the width of the crack.

CAUTION. Always locate, identify and isolate any electrical, water or gas services which may be present in the wall or the wall cavities and can pose a safety risk before drilling or cutting. Always take the necessary safety precautions. Use electrical safety gloves and wear appropriate footwear and eyewear.



RECOMMENDED TOOLING

- For drilling Rotary percussion or SDS rotary hammer drill 650/850w
- For installation of DryFix SDS rotary hammer drill and DryFix Power Driver Attachment

* Specification Notes

The following criteria are to be used unless specified otherwise:

- A. DryFix ties are to be installed at a vertical spacing of 170mm (every 2 brick courses).
- B. DryFix ties are to extend at least 70mm past the crack.
- C. Depth of pilot hole to be DryFix tie length + 10mm.
- D. DryFix ties are to be installed at least 25mm in from the brick edge.
- E. If cracking occurs on both elevations consider using HeliBar crack stitching around the corner (see Repair Detail BCS03). If DryFix ties are to be used, they should be staggered between each elevation.

The above specification notes are for general guidance only and Helifix reserves the right to amend details/notes as necessary.

GENERAL NOTES

- Helifix product details available at www.helifix.com.au.
- If your application differs from this repair detail or you require specific technical information, call Helifix on 1300 66 70 71.

EXAMPLE SPECIFICATION

CRACK STITCHING A CRACKED CORNER IN A BRICK WALL

Material: DRYFIX 8 X @
Product code: HDF8x@

8MM DryFix (HDF8) TIES TO BE INSTALLED INTO EVERY SECOND COURSE (APPROX 170MM). DRYFIX TO BE LONG ENOUGH TO EXTEND 70MM PAST THE CRACK. DRYFIX TIES TO BE INSTALLED INTO PILOT HOLES DRILLED AT LEAST 25MM IN FROM THE BRICK EDGE. PILOT HOLE DIAMETER TO BE DETERMINED ON SITE.

1	HDF	DRYFIX		HELIFIX (AUSTRALIA) PTY LTD		
ITEM	CODE	DESCRIPTION		TYPICAL DRYFIX CRACK STITCHING APPLICATION		
				SCALE 1:20	DWG No. BCS05-EXS	SHEET 1 of 1