

INSTALLATION

**ANZ
RB02**

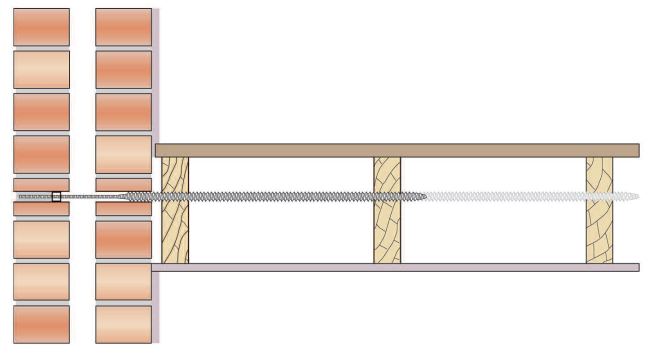
Restraining a cavity wall using BowTie HDs into joist sides

Product	Description	Code
BowTie HD	Grade 304 stainless steel helical wall tie	HBT
EpoxyPlus TE	Thixotropic pure epoxy resin	HTE

Method Statement

1. Mark the positions for the BowTie HD clearance holes on the external wall.*
2. Drill the clearance hole (typically 16mm) through the masonry to line up with the middle third of the timber joist, away from the edges.
3. Clean out the hole to clear any dust or debris.
4. Fit the BowTie HD driver into an SDS hammer drill, set to rotary only. Insert the BowTie HD into the driver.
5. Screw the BowTie HD through the first and second joists (and the third if specified).
6. Place the sleeve over the tie and push it to the back of the hole in the outer leaf masonry.
7. Inject Helifix EpoxyPlus resin into the hole to fill it completely.
8. Allow the resin to gel (normally 15 to 20 minutes).
9. Make good all holes at the surface with brick dust or matching mortar or leave ready for any decoration

CAUTION. Always locate, identify and isolate any electrical, water or gas services which may be present in the wall or the wall, floor or ceiling cavities and can pose a safety risk before drilling or cutting. Always take the necessary safety precautions. Use electrical safety gloves and wear appropriate footwear and eyewear.



RECOMMENDED TOOLING

For drilling and insertion of BowTie HD	SDS rotary hammer drill 650/850w
For installation of BowTie HDBowTie HD Driver
For cleaning the clearance holeAir jet and brush
For injection of EpoxyPlus resinApplicator gun with nozzle

*SPECIFICATION NOTES

The following criteria are to be used unless specified otherwise:

- A. BowTie HD penetration into the side grain of the timber joist should be a minimum of 75mm or the tie should be driven through the joist.
- B. The maximum horizontal spacing between BowTies is 600mm.
- C. Ensure that all joists into which BowTies are to be installed are both sound and secure.
- D. Install Helifix remedial wall ties if existing ties are defective in any way. Refer to Repair Details ANZ RT01-03 for details on Helifix remedial tie installation.

The above specification notes are for general guidance only and Helifix reserves the right to amend details/notes as necessary.

GENERAL NOTES

- Product details available from Helifix.
- Contact Helifix if your application differs from this repair detail or you require specific technical information.